

Skye

AT
HOLLAND

2 Holland Village Way Singapore 279035

UNIT/ FLOOR	01	02	03	04	05	06	07	08	09	10
40	BPS2	BP2	OP1	DP1	BP1	BPS3	BPS1	E1	D1	BPS2
39	BPS2	BP2	OP1	DP1	BP1	BPS3	BPS1	E1	D1	BPS2
38	BPS2	BP2	OP1	DP1	BP1	BPS3	BPS1	E1	D1	BPS2
37	BPS2	BP2	OP1	DP1	BP1	BPS3	BPS1	E1	D1	BPS2
36	BPS2	BP2	OP1	DP1	BP1	BPS3	BPS1	E1	D1	BPS2
35	BPS2	BP2	OP1	DP1	BP1	BPS3	BPS1	E1	D1	BPS2
34	BPS2	BP2	OP1	DP1	BP1	BPS3	BPS1	E1	D1	BPS2
33	BPS2	BP2	OP1	DP1	BP1	BPS3	BPS1	E1	D1	BPS2
32	BPS2	BP2	OP1	DP1	BP1	BPS3	BPS1	E1	E1	BPS2
31	BPS2	BP2	OP1	DP1	BP1	BPS3	BPS1	E1	D1	BPS2
30	BPS2	BP2	OP1	DP1	BP1	BPS3	BPS1	E1	D1	BPS2
29	BPS2	BP2	OP1	DP1	BP1	BPS3	BPS1	E1	D1	BPS2
28	BPS2	BP2	OP1	DP1	BP1	BPS3	BPS1	E1	D1	BPS2
27	BPS2	BP2	OP1	DP1	BP1	BPS3	BPS1	E1	D1	BPS2
26	BPS2	BP2	OP1	DP1	BP1	BPS3	BPS1	E1	D1	BPS2
25	BPS2	BP2	OP1	DP1	BP1	BPS3	BPS1	E1	D1	BPS2
24	BPS2	BP2	OP1	DP1	BP1	BPS3	BPS1	E1	D1	BPS2
23	BPS2	BP2	OP1	DP1	BP1	BPS3	BPS1	E1	D1	BPS2
22	BPS2	BP2	OP1	DP1	BP1	BPS3	BPS1	E1	D1	BPS2
21	BPS2	BP2	OP1	DP1	BP1	BPS3	BPS1	E1	D1	BPS2
20	BPS2	BP2	OP1	DP1	BP1	BPS3	BPS1	E1	D1	BPS2
19	BPS2	BP2	OP1	DP1	BP1	BPS3	BPS1	E1	D1	BPS2
18	BPS2	BP2	OP1	DP1	BP1	BPS3	BPS1	E1	D1	BPS2
17	BPS2	BP2	OP1	DP1	BP1	BPS3	BPS1	E1	D1	BPS2
16	BPS2	BP2	OP1	DP1	BP1	BPS3	BPS1	E1	D1	BPS2
15	BPS2	BP2	OP1	DP1	BP1	BPS3	BPS1	E1	D1	BPS2
14	BPS2	BP2	OP1	DP1	BP1	BPS3	BPS1	E1	D1	BPS2
13	BPS2	BP2	OP1	DP1	BP1	BPS3	BPS1	E1	D1	BPS2
12	BPS2	BP2	OP1	DP1	BP1	BPS3	BPS1	E1	D1	BPS2
11	BPS2	BP2	OP1	DP1	BP1	BPS3	BPS1	E1	D1	BPS2
10	BPS2	BP2	OP1	DP1	BP1	BPS3	BPS1	E1	D1	BPS2
09	BPS2	BP2	OP1	DP1	BP1	BPS3	BPS1	E1	D1	BPS2
08	BPS2	BP2	OP1	DP1	BP1	BPS3	BPS1	E1	D1	BPS2
07	BPS2	BP2	OP1	DP1	BP1	BPS3	BPS1	E1	D1	BPS2
06	BPS2	BP2	OP1	DP1	BP1	BPS3	BPS1	E1	D1	BPS2
05	BPS2	BP2	OP1	DP1	BP1	BPS3	BPS1	E1	D1	BPS2
04	BPS2	BP2	OP1	DP1	BP1	BPS3	BPS1	E1	D1	BPS2
03	SKY TERRACE									
02										
01	CARPARK									
B1										
B2										

	BEDROOM	TYPE	AREA
	2-Bedroom	B1	54 sqm 581 sqft
		B2	54 sqm 581 sqft
	2-Bedroom Premium	BP1	62 sqm 667 sqft
		BP2	62 sqm 667 sqft
		BP3	63 sqm 678 sqft
		BP4	63 sqm 678 sqft
	2-Bedroom Premium + Study	BPS1	68 sqm 732 sqft
		BPS2	68 sqm 732 sqft
		BPS3	69 sqm 743 sqft

6 Holland Village Way Singapore 279037

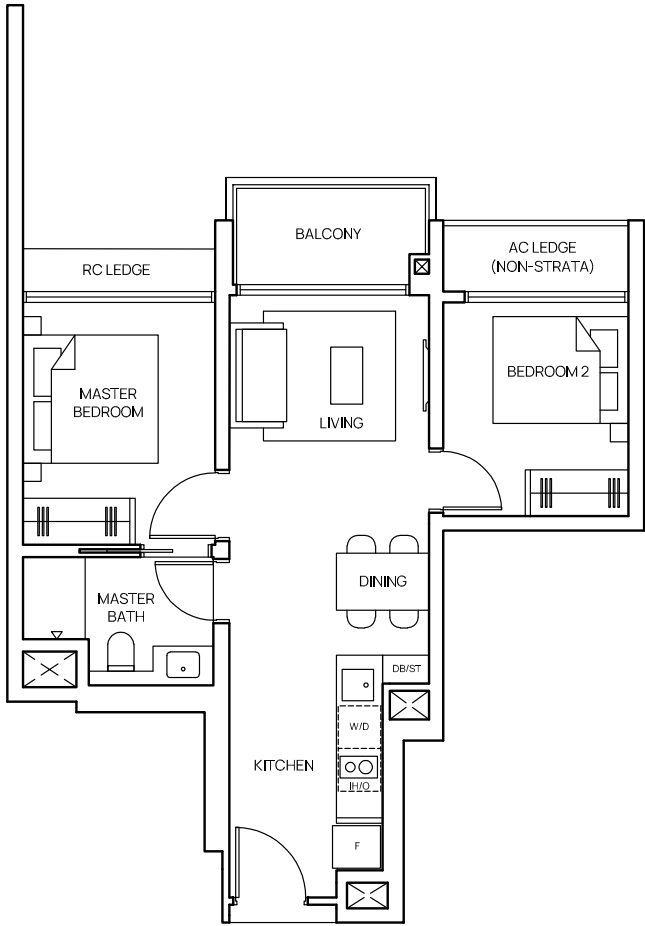
UNIT/ FLOOR	11	12	13	14	15	16	17	18
40	BP3	C2	CP2	BP4	B2	C1	D2	B1
39	BP3	C2	CP2	BP4	B2	C1	D2	B1
38	BP3	C2	CP2	BP4	B2	C1	D2	B1
37	BP3	C2	CP2	BP4	B2	C1	D2	B1
36	BP3	C2	CP2	BP4	B2	C1	D2	B1
35	BP3	C2	CP2	BP4	B2	C1	D2	B1
34	BP3	C2	CP2	BP4	B2	C1	D2	B1
33	BP3	C2	CP2	BP4	B2	C1	D2	B1
32	BP3	C2	CP2	BP4	B2	C1	D2	B1
31	BP3	C2	CP2	BP4	B2	C1	D2	B1
30	BP3	C2	CP2	BP4	B2	C1	D2	B1
29	BP3	C2	CP2	BP4	B2	C1	D2	B1
28	BP3	C2	CP2	BP4	B2	C1	D2	B1
27	BP3	C2	CP2	BP4	B2	C1	D2	B1
26	BP3	C2	CP2	BP4	B2	C1	D2	B1
25	BP3	C2	CP2	BP4	B2	C1	D2	B1
24	BP3	C2	CP2	BP4	B2	C1	D2	B1
23	BP3	C2	CP2	BP4	B2	C1	D2	B1
22	BP3	C2	CP2	BP4	B2	C1	D2	B1
21	BP3	C2	CP2	BP4	B2	C1	D2	B1
20	BP3	C2	CP2	BP4	B2	C1	D2	B1
19	BP3	C2	CP2	BP4	B2	C1	D2	B1
18	BP3	C2	CP2	BP4	B2	C1	D2	B1
17	BP3	C2	CP2	BP4	B2	C1	D2	B1
16	BP3	C2	CP2	BP4	B2	C1	D2	B1
15	BP3	C2	CP2	BP4	B2	C1	D2	B1
14	BP3	C2	CP2	BP4	B2	C1	D2	B1
13	BP3	C2	CP2	BP4	B2	C1	D2	B1
12	BP3	C2	CP2	BP4	B2	C1	D2	B1
11	BP3	C2	CP2	BP4	B2	C1	D2	B1
10	BP3	C2	CP2	BP4	B2	C1	D2	B1
09	BP3	C2	CP2	BP4	B2	C1	D2	B1
08	BP3	C2	CP2	BP4	B2	C1	D2	B1
07	BP3	C2	CP2	BP4	B2	C1	D2	B1
06	BP3	C2	CP2	BP4	B2	C1	D2	B1
05	BP3	C2	CP2	BP4	B2	C1	D2	B1
04	BP3	C2	CP2	BP4	B2	C1	D2	B1
03	SKY TERRACE							
02								
01	CARPARK							
B1								
B2								

	BEDROOM	TYPE	AREA
	3-Bedroom	C1	85 sqm 915 sqft
		C2	85 sqm 915 sqft
	3-Bedroom Premium	OP1	100 sqm 1,076 sqft
		OP2	100 sqm 1,076 sqft
	4-Bedroom (with Private Lift)	D1	115 sqm 1,238 sqft
		D2	115 sqm 1,238 sqft
	4-Bedroom Premium (with Private Lift)	DP1	136 sqm 1,464 sqft
	5-Bedroom Premium (with Private Lift)	E1	164 sqm 1,765 sqft

2-Bedroom

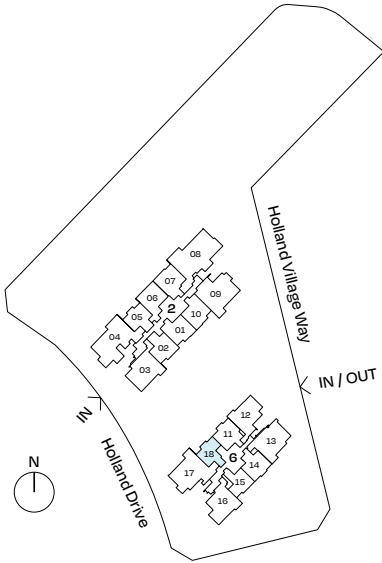
TYPE B1

54 sqm (581 sqft)
#04-18 to #40-18



0 1 2 3 4 5m

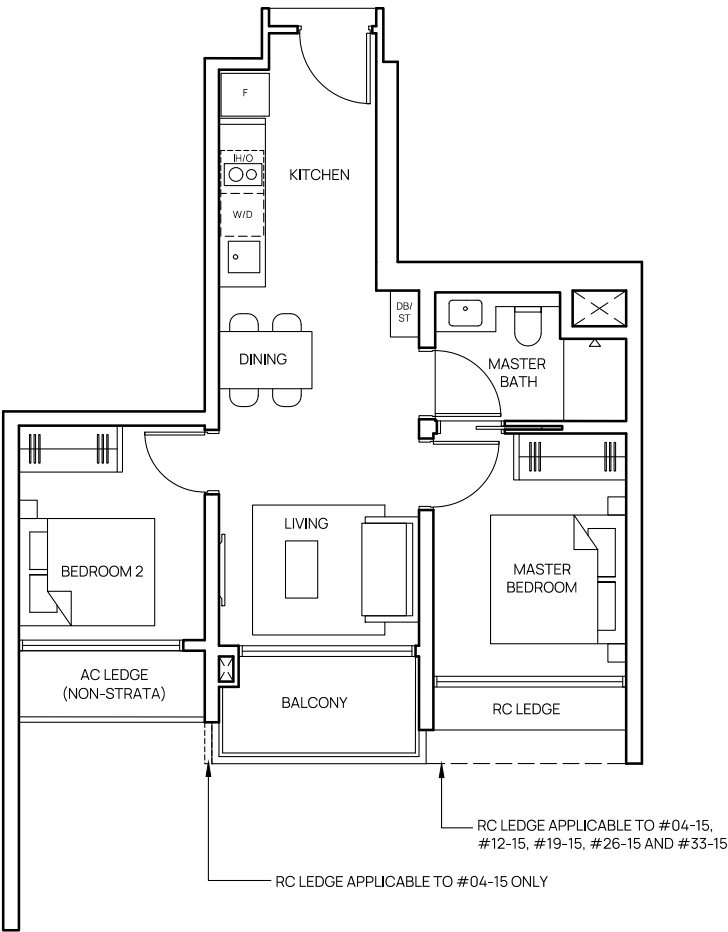
Areas include balcony where applicable. All AC ledges and RC ledges (non-load bearing) are excluded from strata area. The plans are subjected to change as may be required by relevant authorities. All areas and measurements stated herein as approximate and subject to final survey.



2-Bedroom

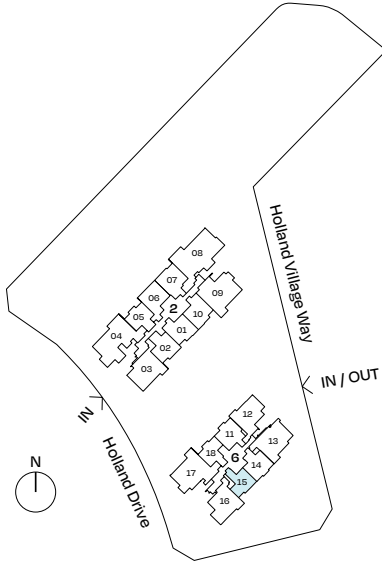
TYPE B2

54 sqm (581 sqft)
#04-15 to #40-15



0 1 2 3 4 5m

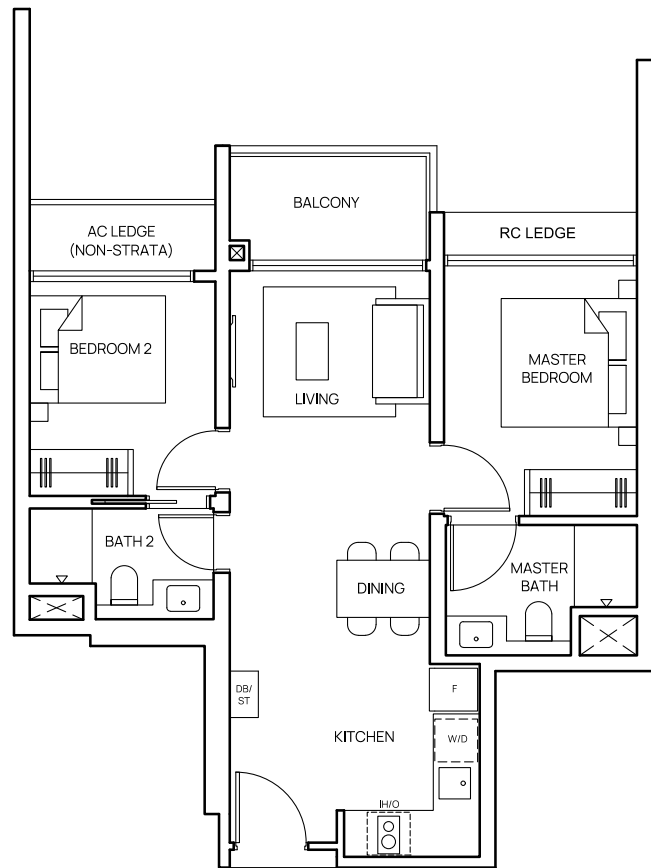
Areas include balcony where applicable. All AC ledges and RC ledges (non-load bearing) are excluded from strata area. The plans are subjected to change as may be required by relevant authorities. All areas and measurements stated herein as approximate and subject to final survey.



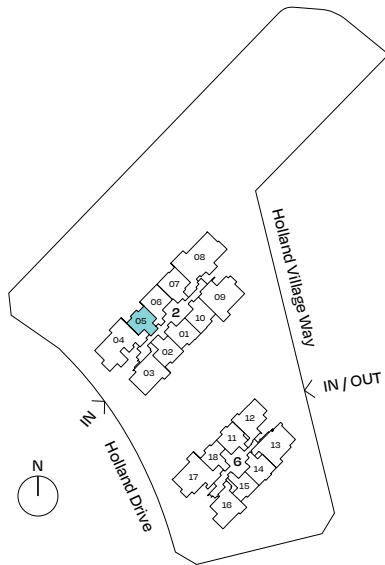
2-Bedroom Premium

TYPE BP1

62 sqm (667 sqft)
#04-05 to #40-05



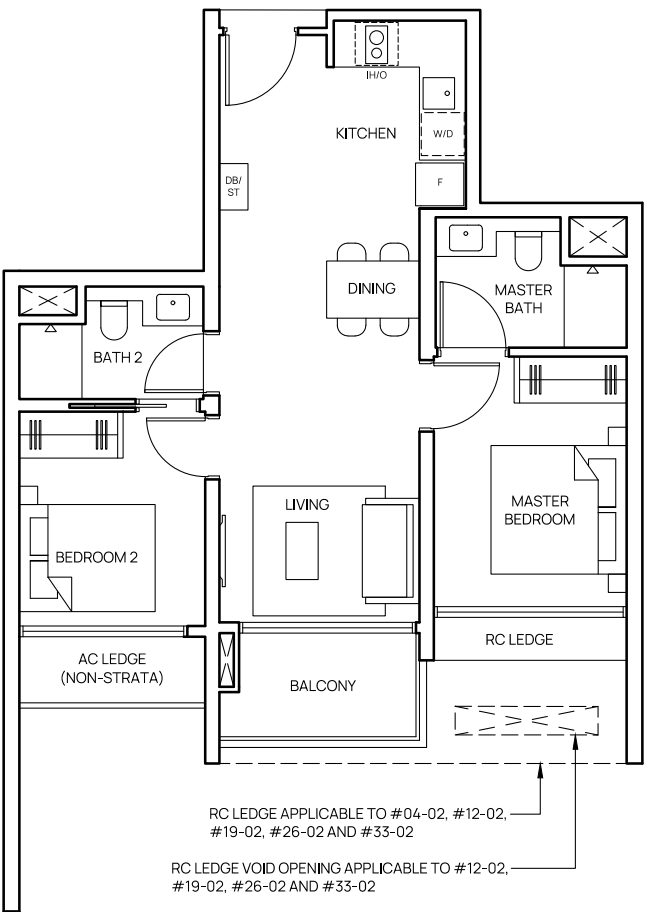
Areas include balcony where applicable. All AC ledges and RC ledges (non-load bearing) are excluded from strata area. The plans are subjected to change as may be required by relevant authorities. All areas and measurements stated herein as approximate and subject to final survey.



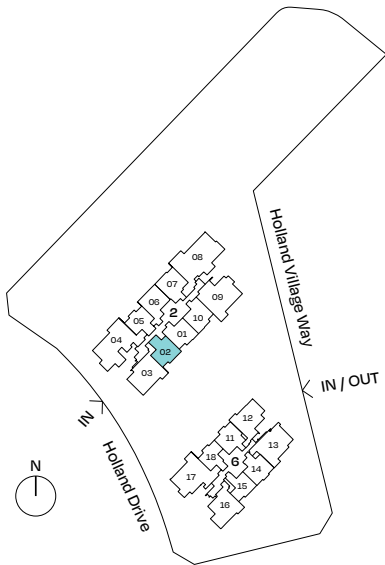
2-Bedroom Premium

TYPE BP2

62 sqm (667 sqft)
#04-02 to #40-02



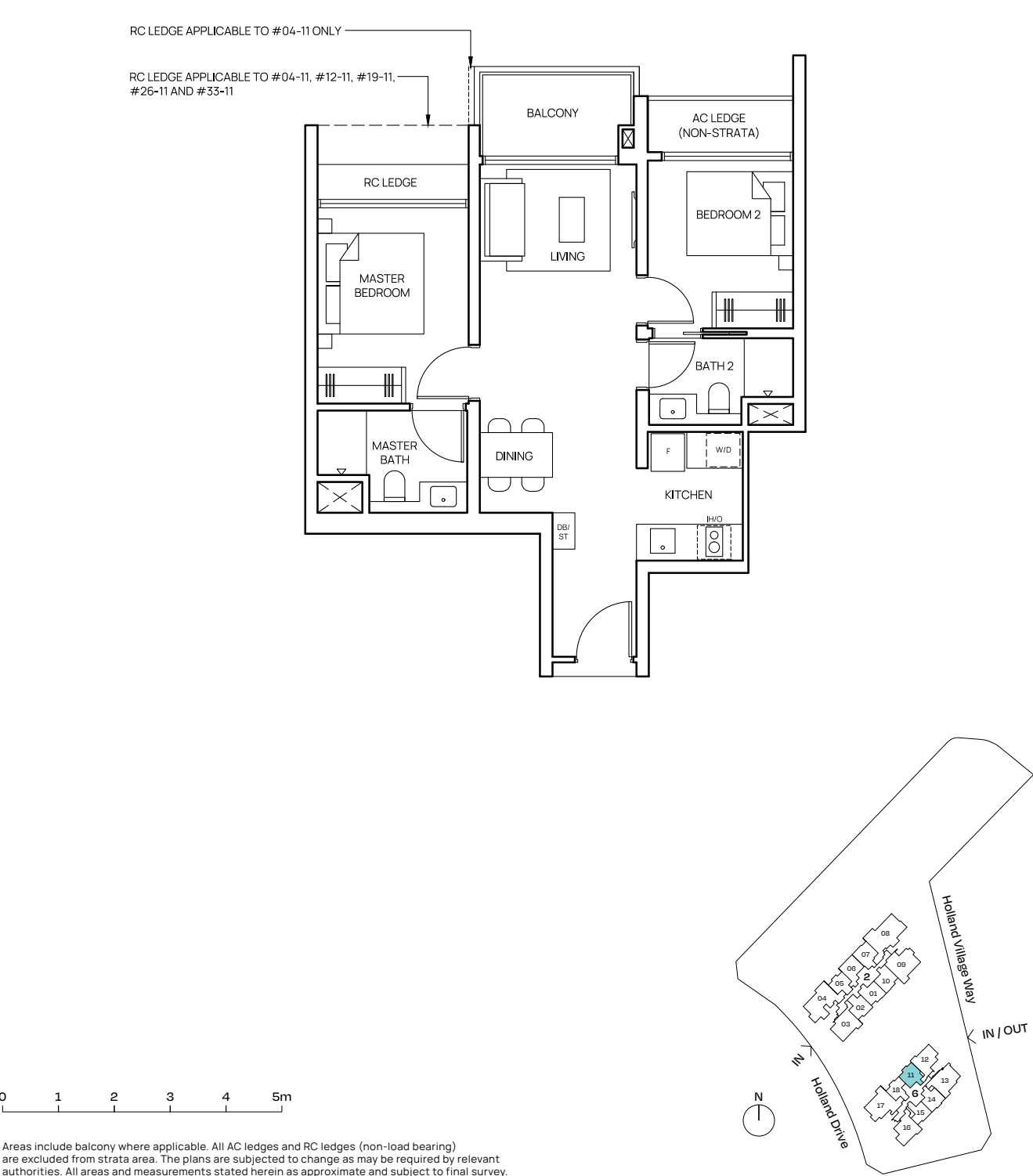
Areas include balcony where applicable. All AC ledges and RC ledges (non-load bearing) are excluded from strata area. The plans are subjected to change as may be required by relevant authorities. All areas and measurements stated herein as approximate and subject to final survey.



2-Bedroom Premium

TYPE BP3

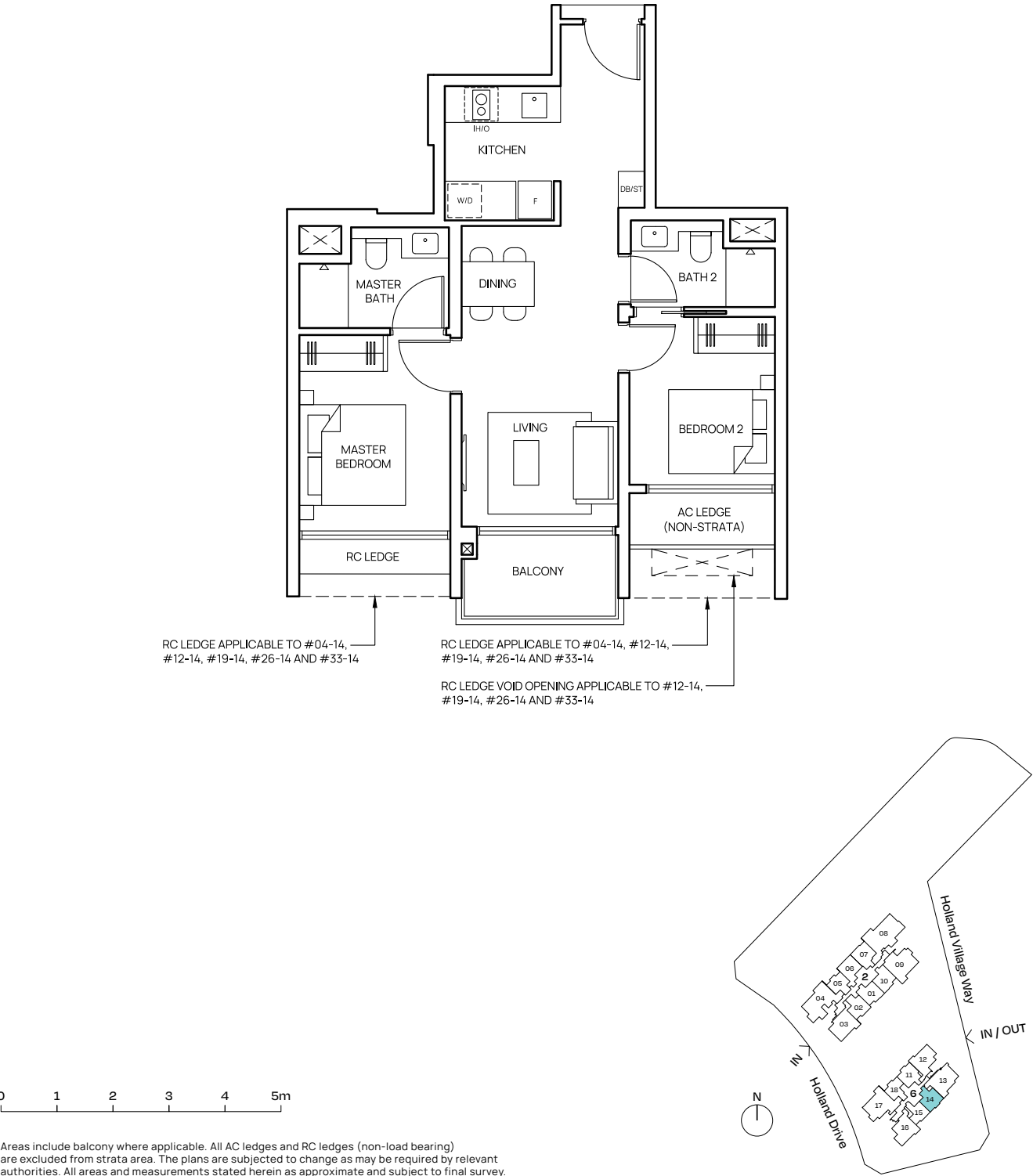
63 sqm (678 sqft)
#04-11 to #40-11



2-Bedroom Premium

TYPE BP4

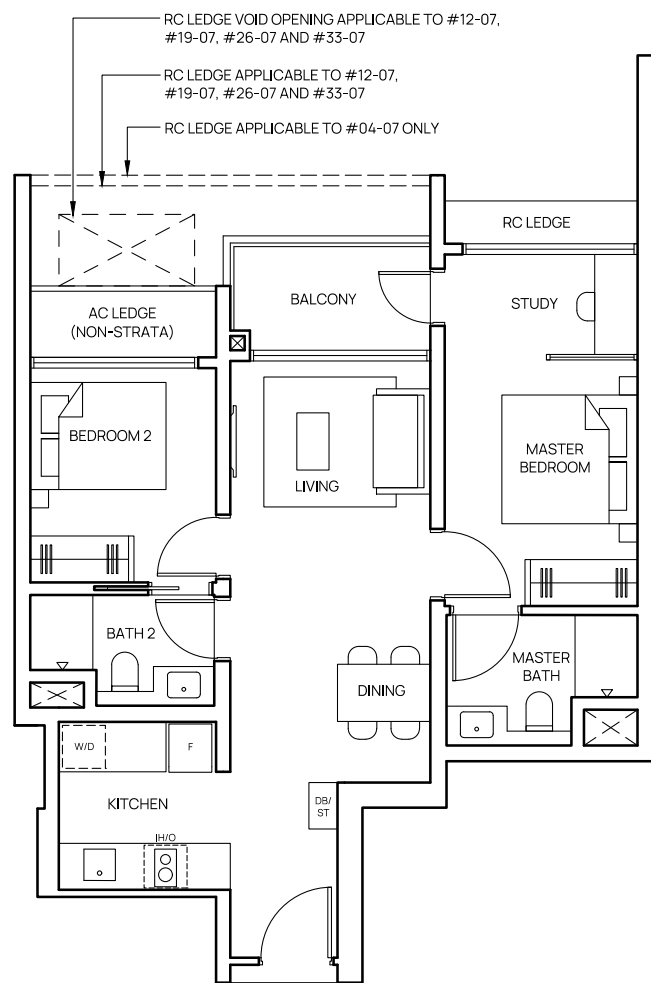
63 sqm (678 sqft)
#04-14 to #40-14



2-Bedroom Premium + Study

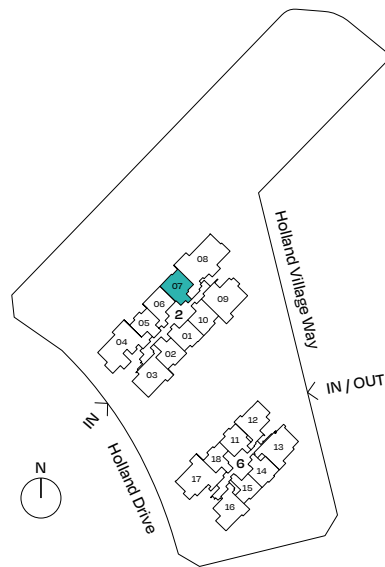
TYPE BPS1

68 sqm (732 sqft)
#04-07 to #40-07



0 1 2 3 4 5m

Areas include balcony where applicable. All AC ledges and RC ledges (non-load bearing) are excluded from strata area. The plans are subjected to change as may be required by relevant authorities. All areas and measurements stated herein as approximate and subject to final survey.

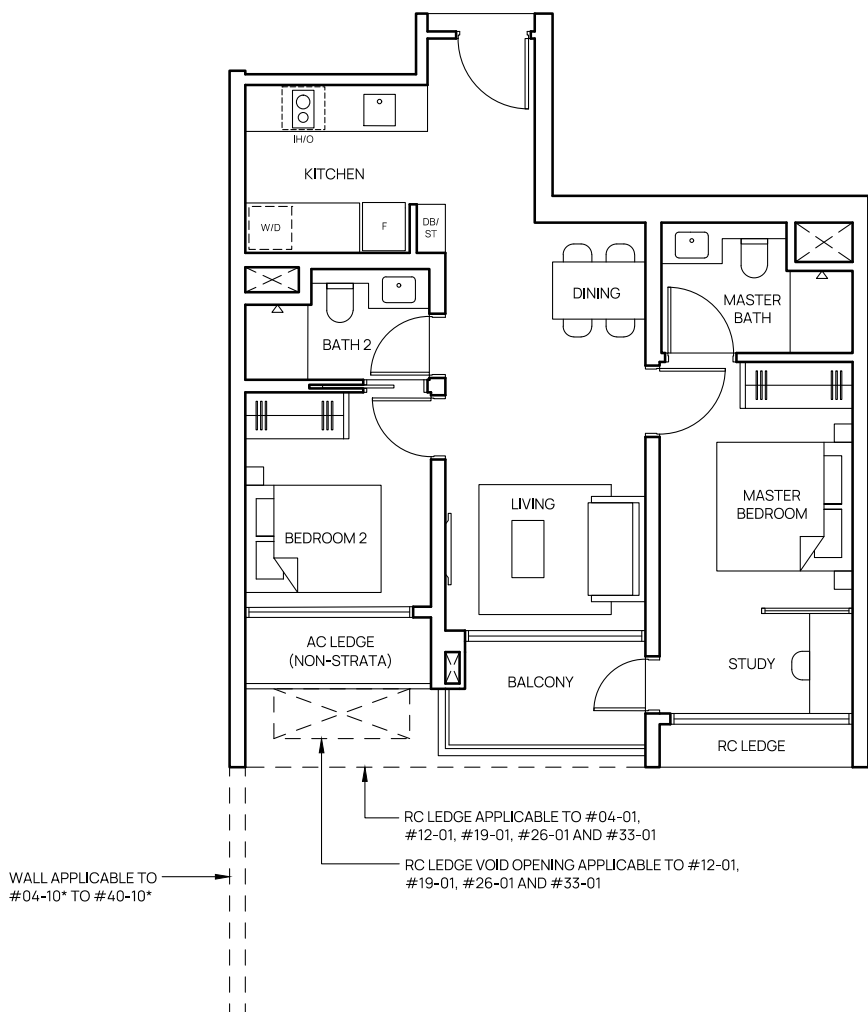


2-Bedroom Premium + Study

TYPE BPS2

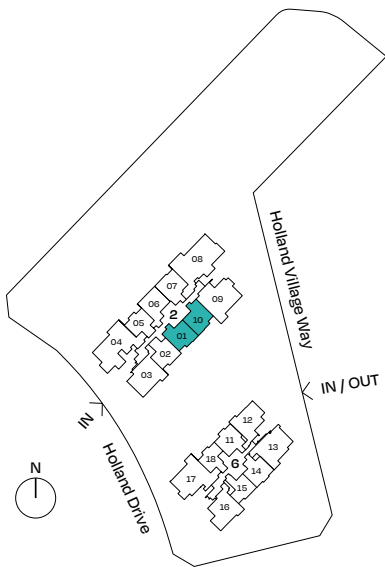
68 sqm (732 sqft)
#04-01 to #40-01

#04-10* to #40-10*
*Mirrored Unit



0 1 2 3 4 5m

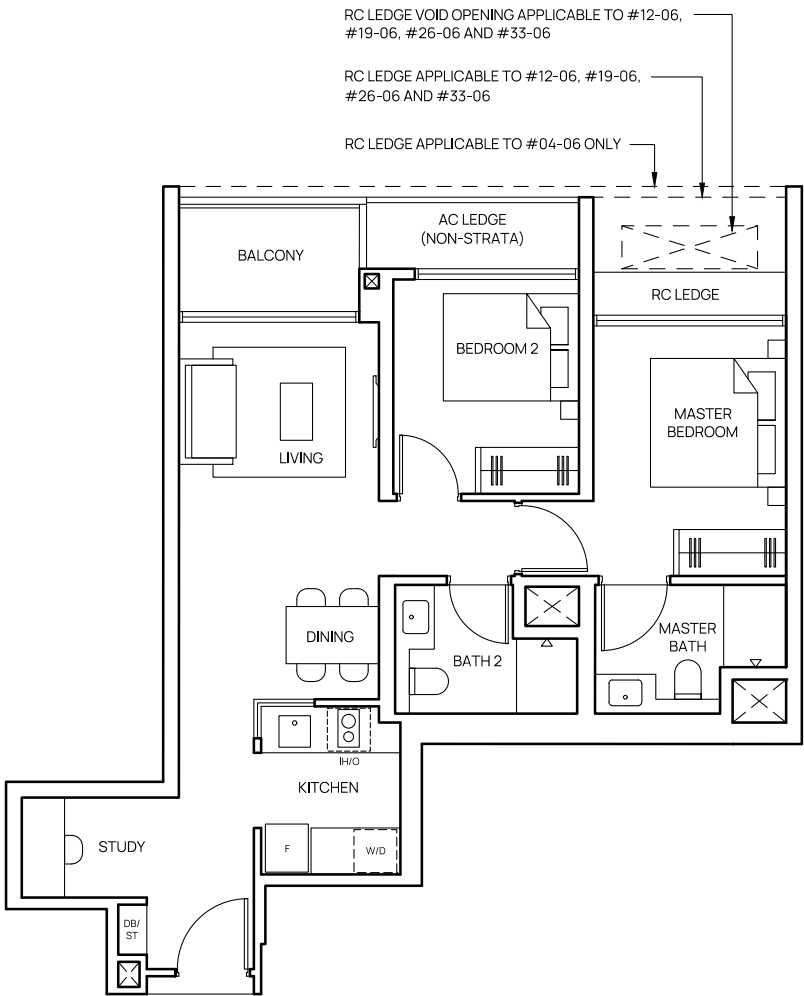
Areas include balcony where applicable. All AC ledges and RC ledges (non-load bearing) are excluded from strata area. The plans are subjected to change as may be required by relevant authorities. All areas and measurements stated herein as approximate and subject to final survey.



2-Bedroom Premium + Study

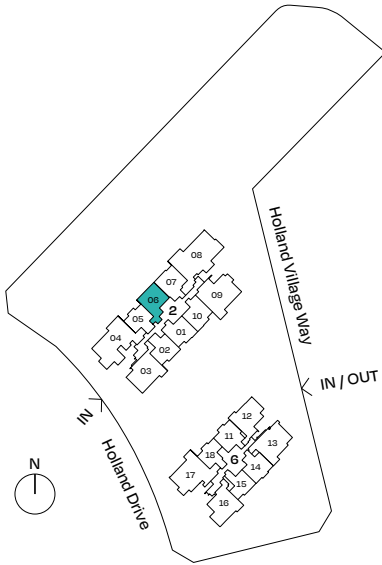
TYPE BPS3

69 sqm (743 sqft)
#04-06 to #40-06



0 1 2 3 4 5m

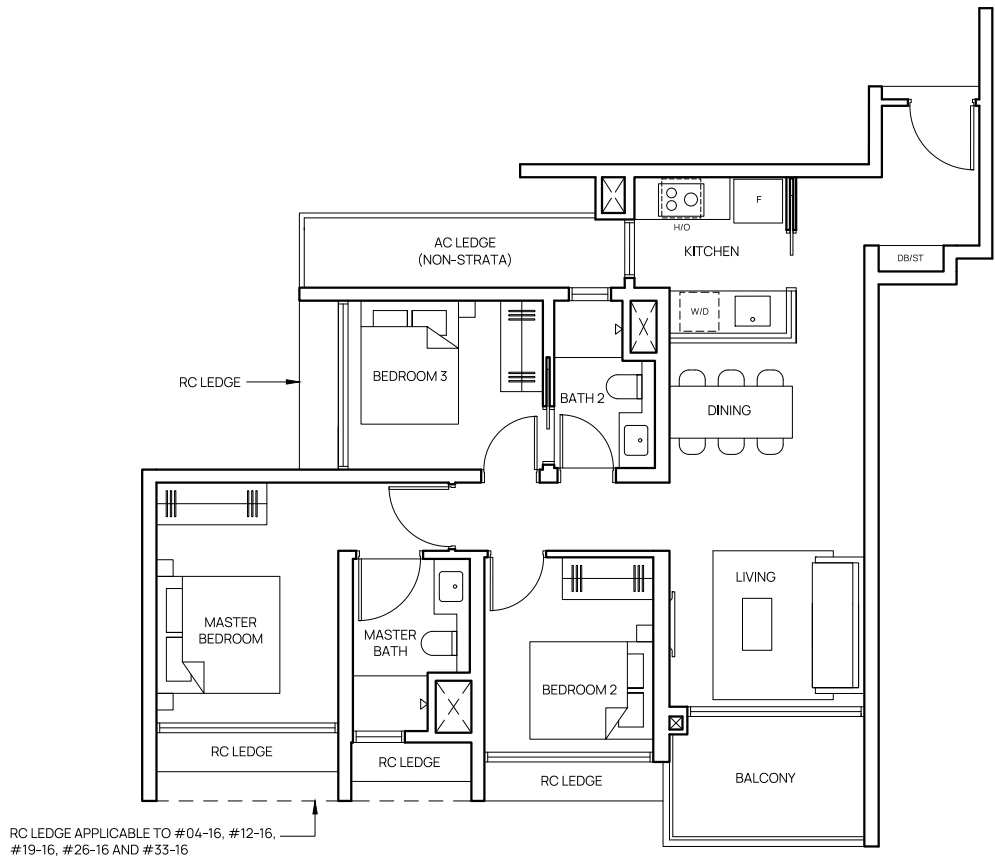
Areas include balcony where applicable. All AC ledges and RC ledges (non-load bearing) are excluded from strata area. The plans are subjected to change as may be required by relevant authorities. All areas and measurements stated herein as approximate and subject to final survey.



3-Bedroom

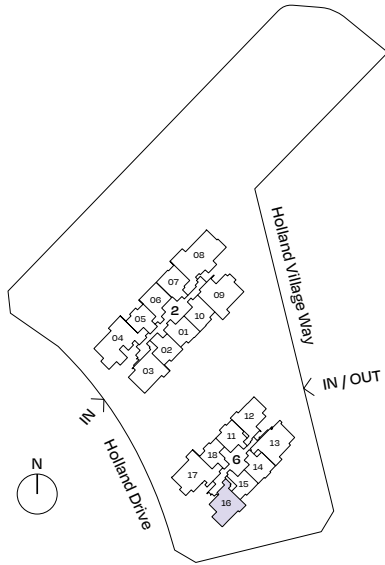
TYPE C1

85 sqm (915 sqft)
#04-16 to #40-16



0 1 2 3 4 5m

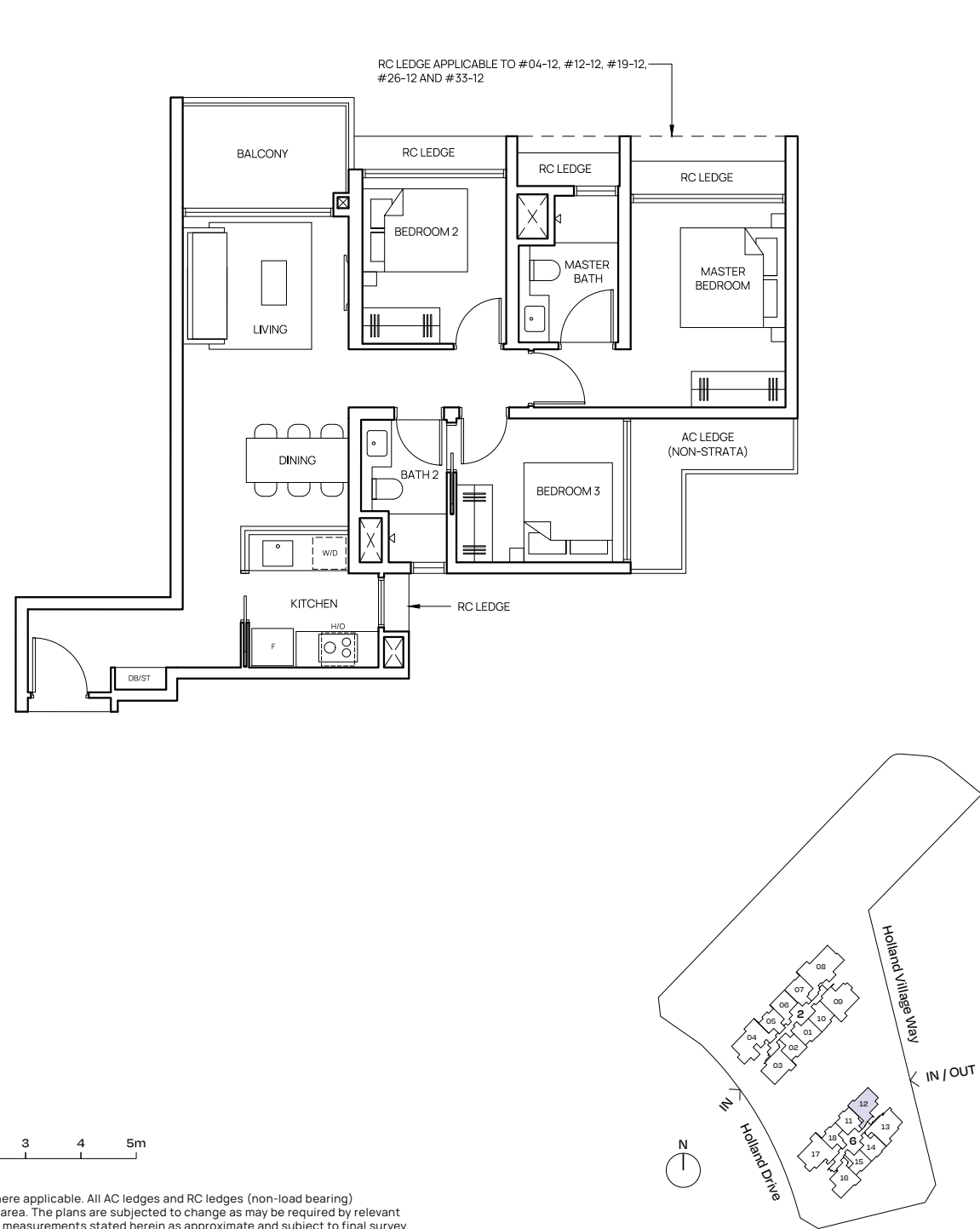
Areas include balcony where applicable. All AC ledges and RC ledges (non-load bearing) are excluded from strata area. The plans are subjected to change as may be required by relevant authorities. All areas and measurements stated herein as approximate and subject to final survey.



3-Bedroom

TYPE C2

85 sqm (915 sqft)
#04-12 to #40-12

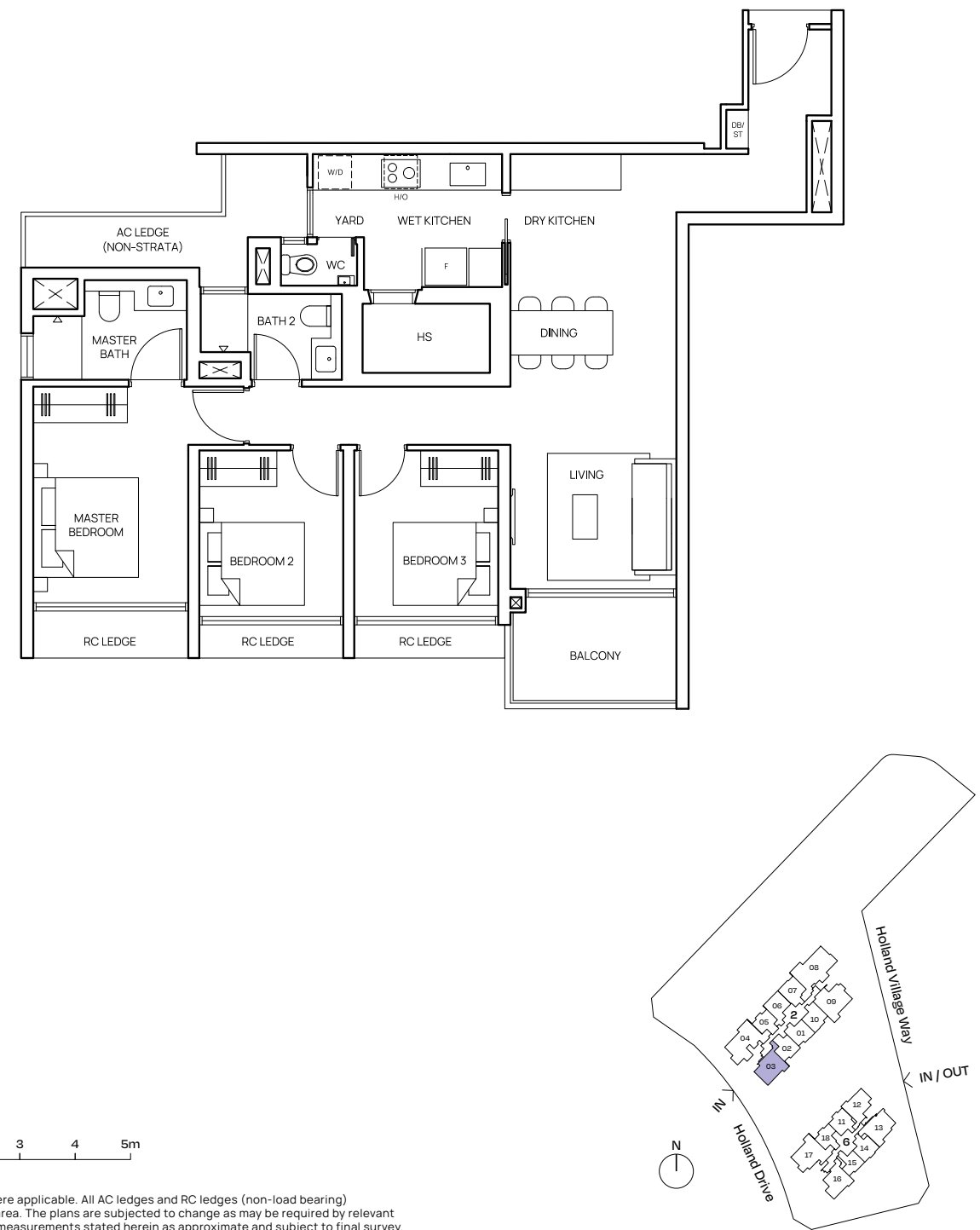


Areas include balcony where applicable. All AC ledges and RC ledges (non-load bearing) are excluded from strata area. The plans are subjected to change as may be required by relevant authorities. All areas and measurements stated herein as approximate and subject to final survey.

3-Bedroom Premium

TYPE CP1

100 sqm (1,076 sqft)
#04-03 to #40-03

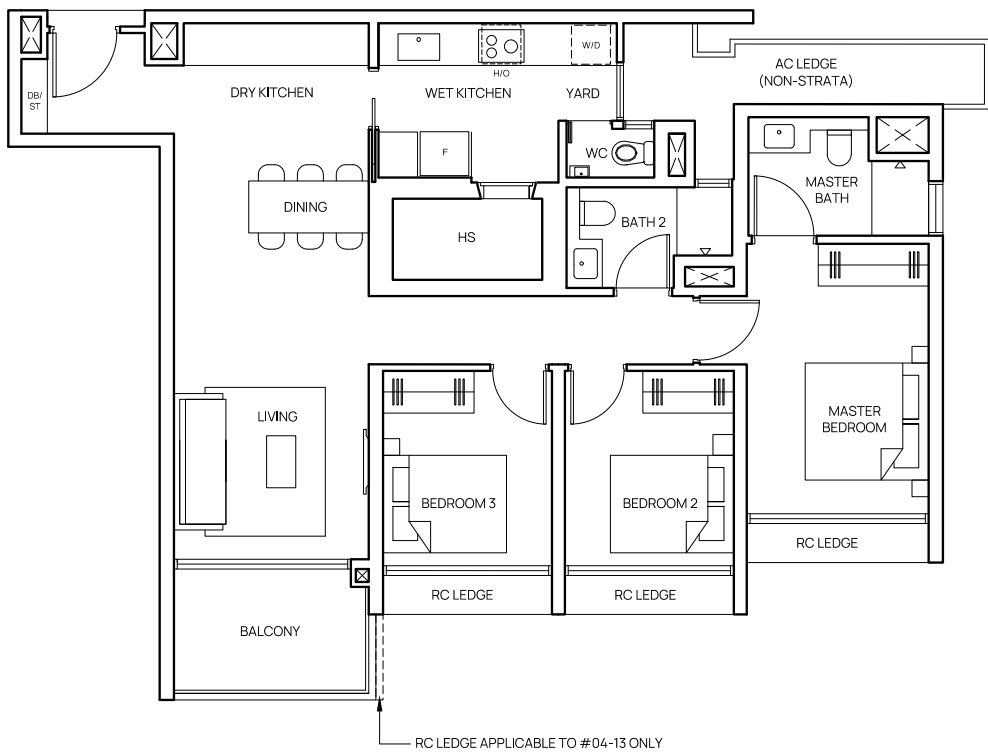


Areas include balcony where applicable. All AC ledges and RC ledges (non-load bearing) are excluded from strata area. The plans are subjected to change as may be required by relevant authorities. All areas and measurements stated herein as approximate and subject to final survey.

3-Bedroom Premium

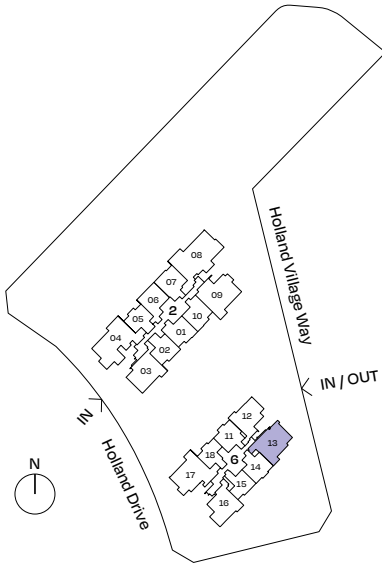
TYPE CP2

100 sqm (1,076 sqft)
#04-13 to #40-13



0 1 2 3 4 5m

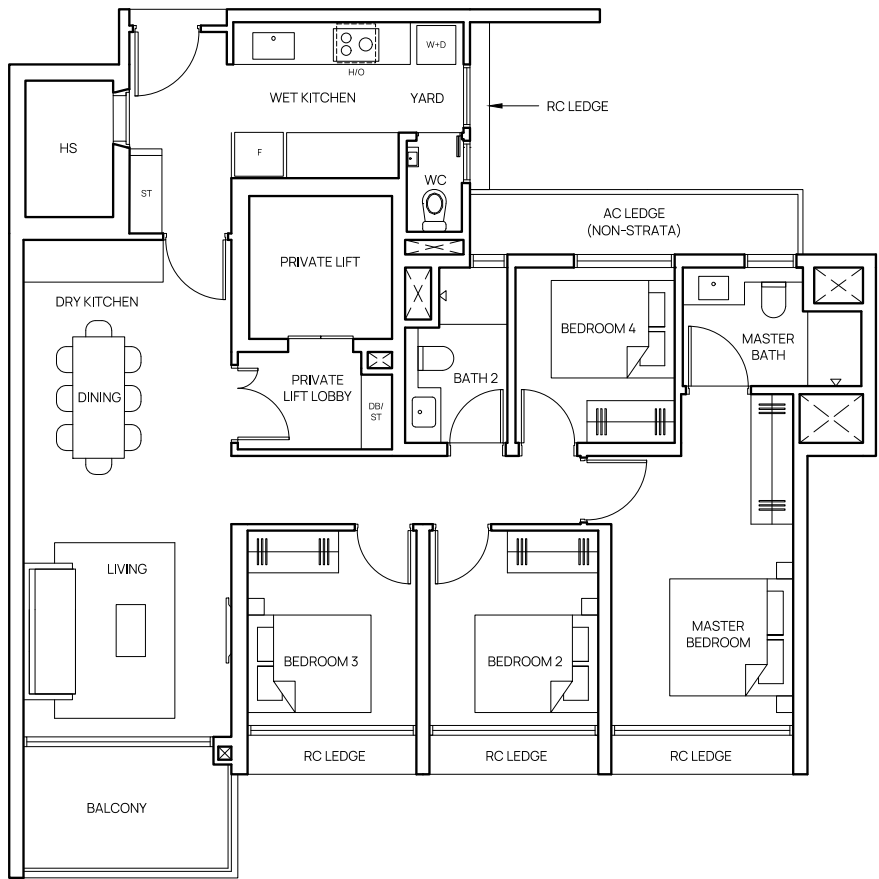
Areas include balcony where applicable. All AC ledges and RC ledges (non-load bearing) are excluded from strata area. The plans are subjected to change as may be required by relevant authorities. All areas and measurements stated herein as approximate and subject to final survey.



4-Bedroom (with Private Lift)

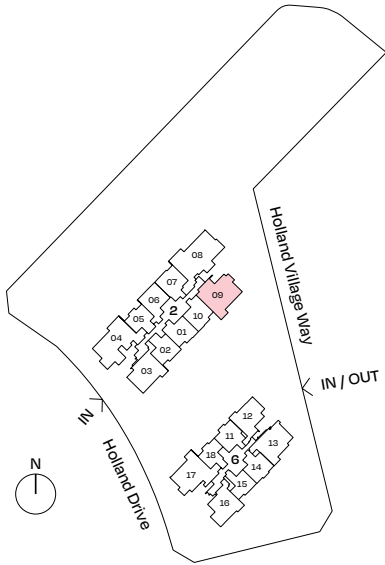
TYPE D1

115 sqm (1,238 sqft)
#04-09 to #40-09



0 1 2 3 4 5m

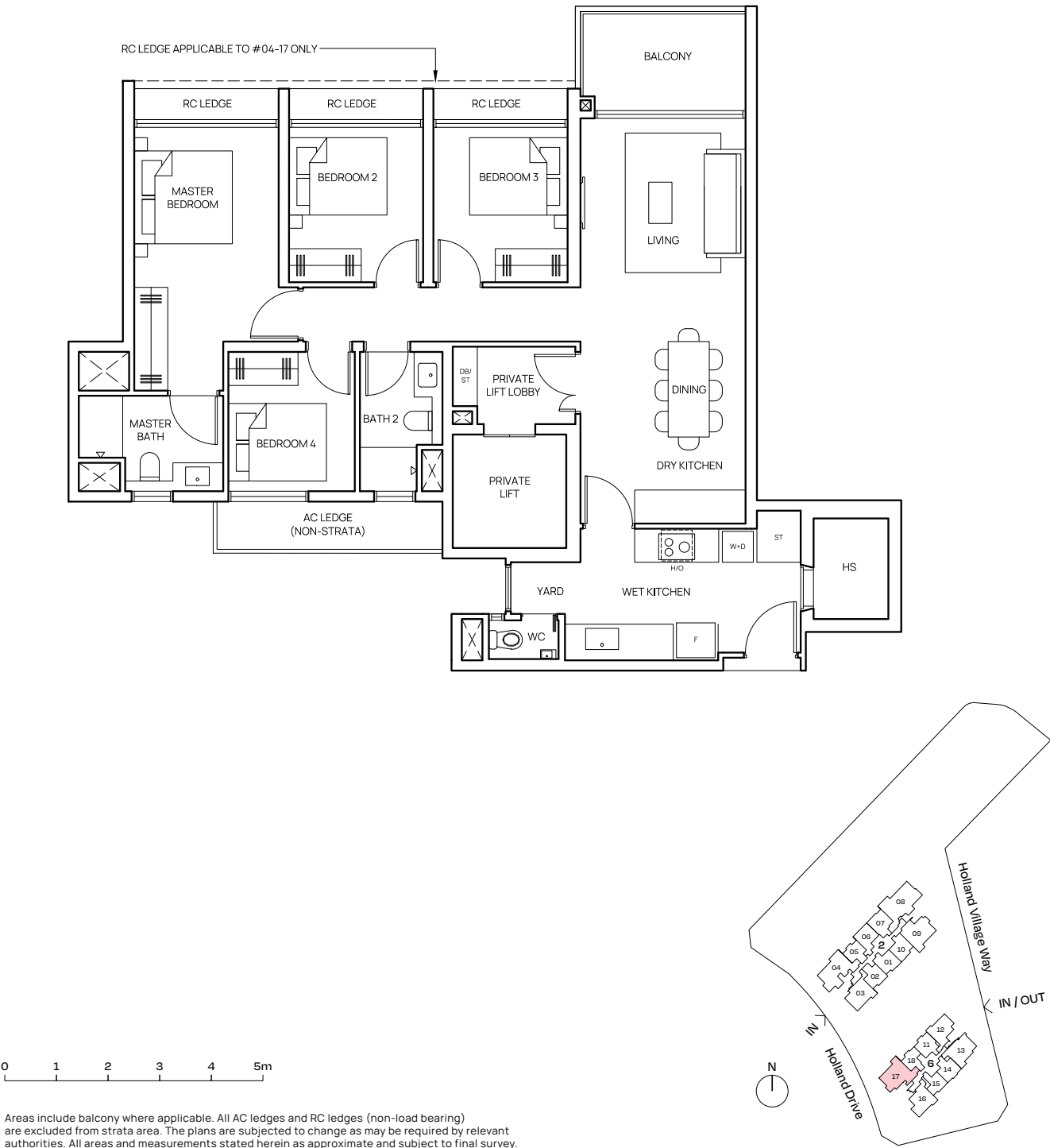
Areas include balcony where applicable. All AC ledges and RC ledges (non-load bearing) are excluded from strata area. The plans are subjected to change as may be required by relevant authorities. All areas and measurements stated herein as approximate and subject to final survey.



4-Bedroom (with Private Lift)

TYPE D2

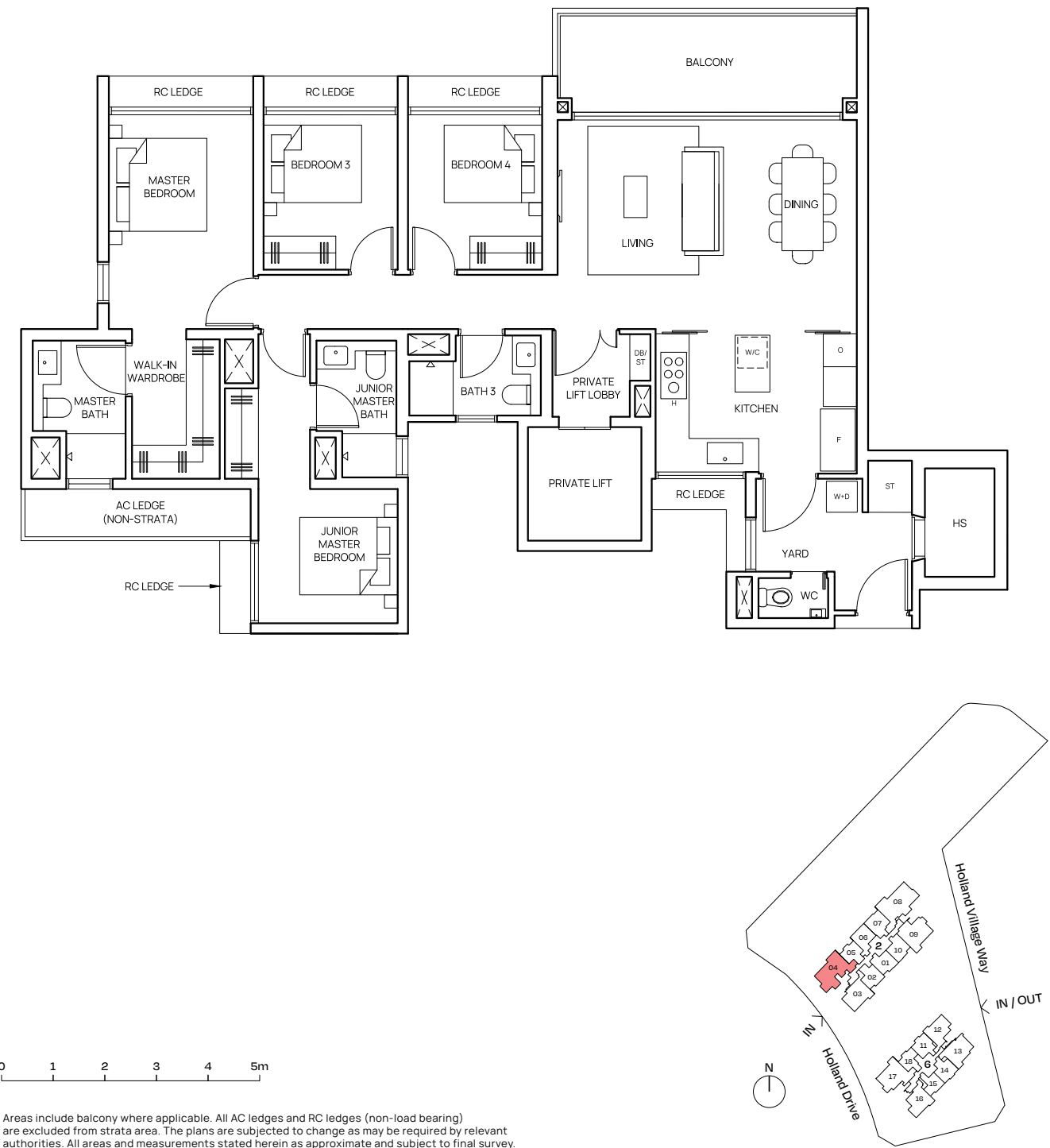
115 sqm (1,238 sqft)
#04-17 to #40-17



4-Bedroom Premium (with Private Lift)

TYPE DP1

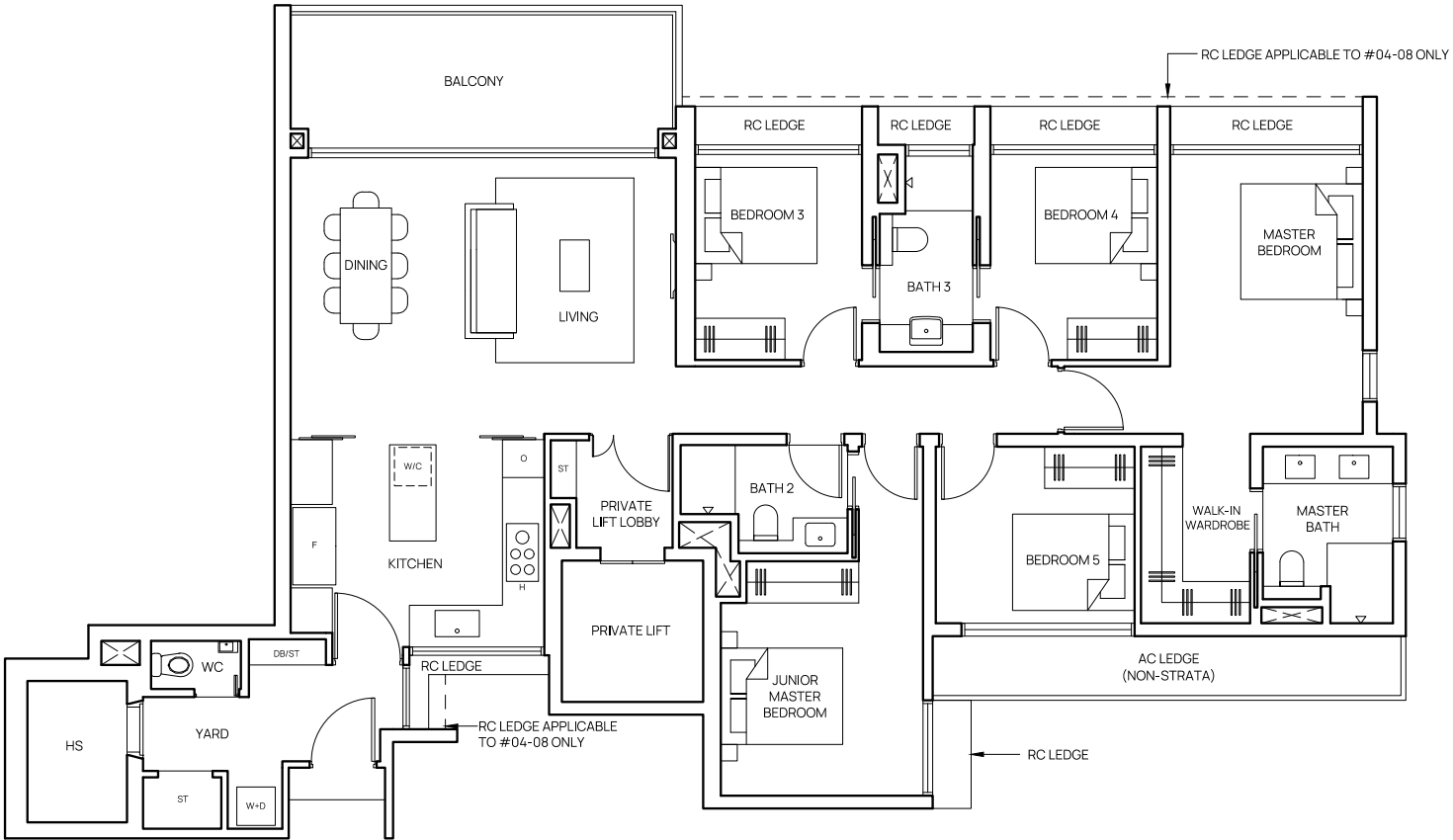
136 sqm (1,464 sqft)
#04-04 to #40-04



5-Bedroom Premium (with Private Lift)

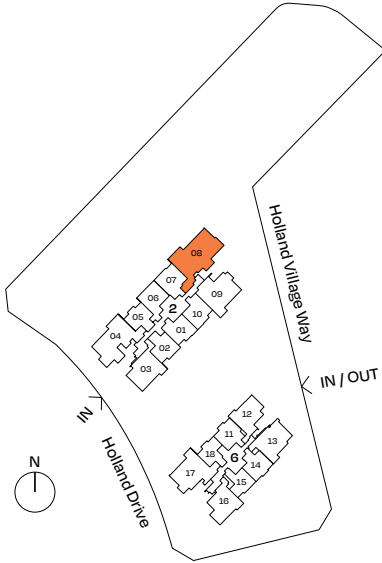
TYPE E1

164 sqm (1,765 sqft)
#04-08 to #40-08



0 1 2 3 4 5m

Areas include balcony where applicable. All AC ledges and RC ledges (non-load bearing) are excluded from strata area. The plans are subjected to change as may be required by relevant authorities. All areas and measurements stated herein as approximate and subject to final survey.



FOR ILLUSTRATION ONLY

